

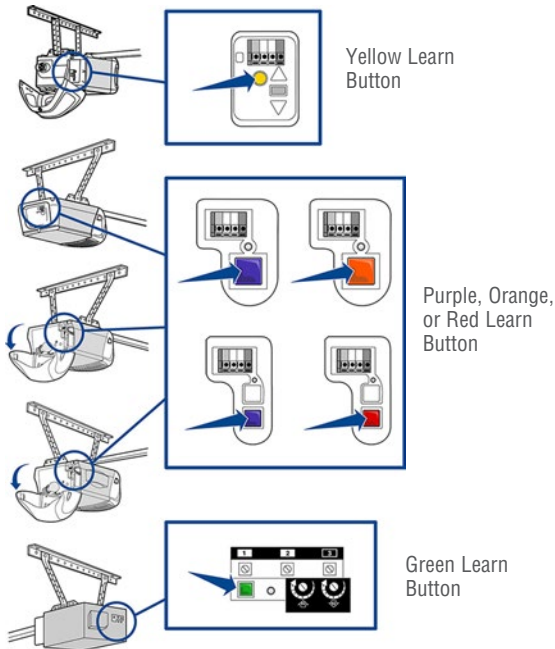
Need Help?

LOCATE THE PROGRAM/LEARN BUTTON

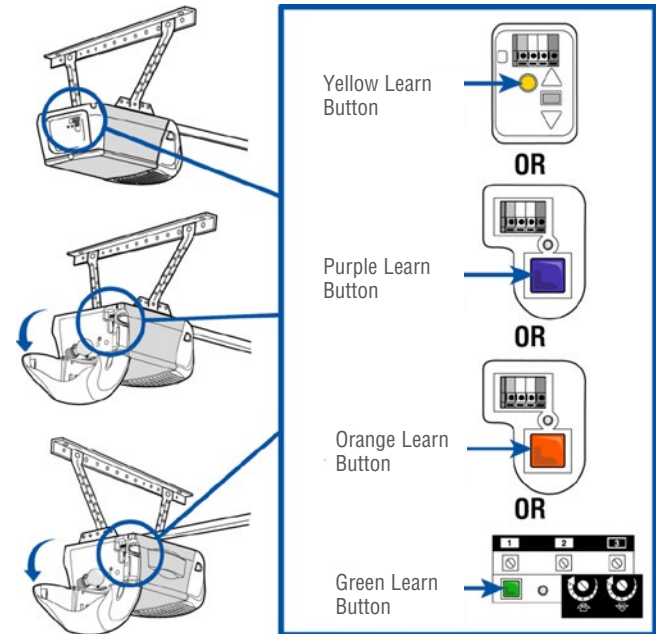
I cannot locate the Program/LEARN button on my garage door opener.

The Program/LEARN button is typically found on the side or back of the garage door opener mounted on the ceiling in the garage. You may have to remove or open the light lens to access or see the Program/LEARN button. Refer to the following images for most garage door opener brands.

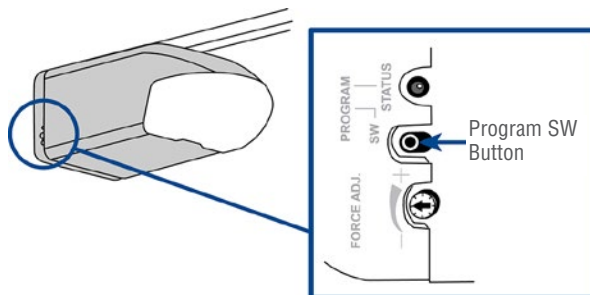
CHAMBERLAIN® & CRAFTSMAN® PRODUCTS



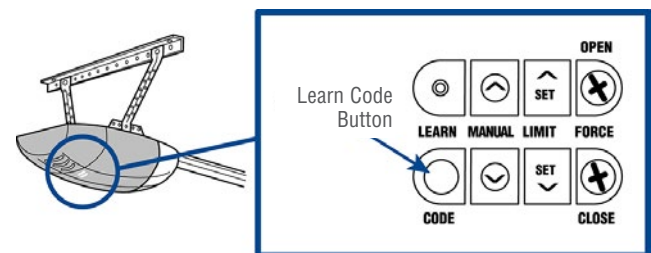
LIFTMASTER® PRODUCTS



WAYNE-DALTON® PRODUCTS



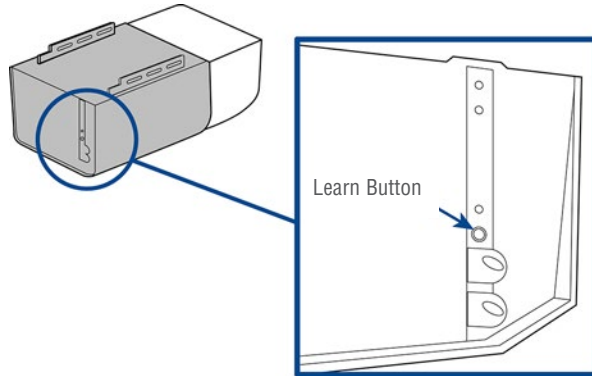
OVERHEAD DOOR® PRODUCTS



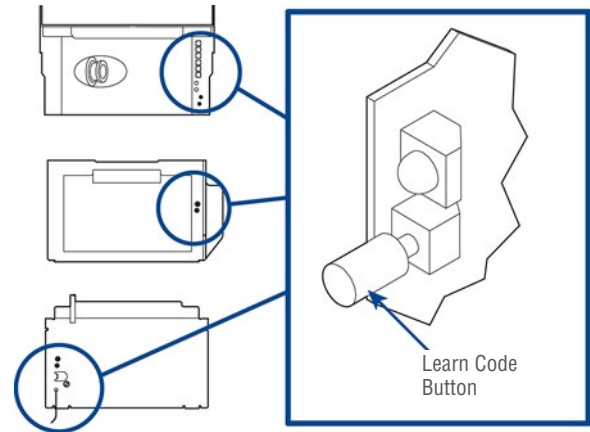
Need Help?

LOCATE THE PROGRAM/LEARN BUTTON

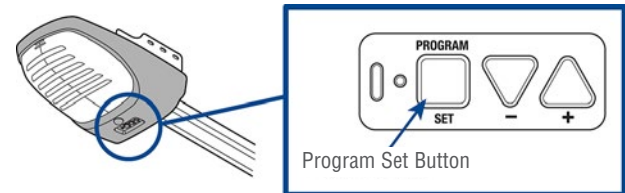
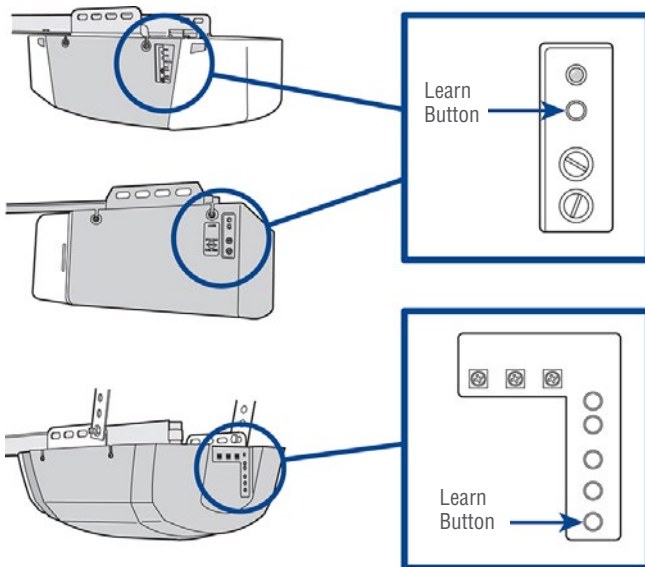
STANLEY® PRODUCTS



GENIE® PRODUCTS



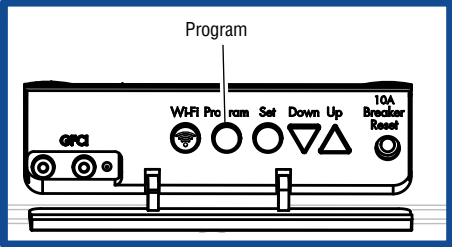
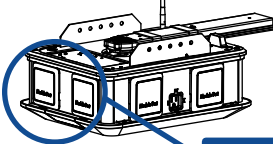
LINEAR® PRODUCTS



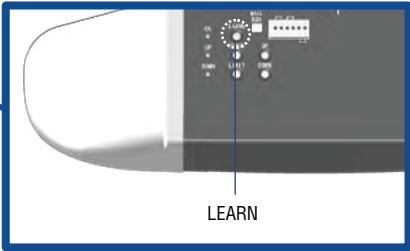
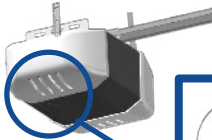
Need Help?

LOCATE THE PROGRAM/LEARN BUTTON

RYOBI™ PRODUCTS



XTREME GARAGE™ PRODUCTS



Chamberlain and LiftMaster are Trademarks of Chamberlain Group, Inc. Genie is a Trademark of GMI Holdings, Inc. Overhead Door and Wayne Dalton are Trademarks of Overhead Door Corporation. Linear is a Trademark of Nortek Security & Control LLC. Master Mechanic is a Trademark of True Value Company. Craftsman is a Trademark of KCD IP, LLC. Stanley is a Trademark of Stanley Logistics, L.L.C. Do It is a trademark of Do It Best Corp. Ryobi is a Trademark of Ryobi Ltd. Xtreme Garage is a Trademark of Menard, Inc. Neither The Chamberlain Group, Inc. nor this product are associated or affiliated with any of these third parties.

© 2016, The Chamberlain Group, Inc.
All Rights Reserved
AUT001